



# Harrisburg University

Director of Learning Assessment



on  
L I C

Harrisburg University offers undergraduate and graduate degree programs in applied science and technology fields for a diversity of students. Its focus is to educate career-minded individuals in the areas of science, technology, engineering and math (STEM careers), giving them the tools to succeed, while helping to shape their communities, locally and beyond. Their goal is to help stimulate economic growth in our region by establishing a STEM educated workforce — a necessary resource in today's economy.

## **Mission:**

The Harrisburg University of Science and Technology is an independent educational institution offering academic and research programs in mathematics, science and technology designed to meet the needs of the region's youth, workforce, and businesses, and to expand, attract, and create economic opportunities in the region.

## **At a Glance:**

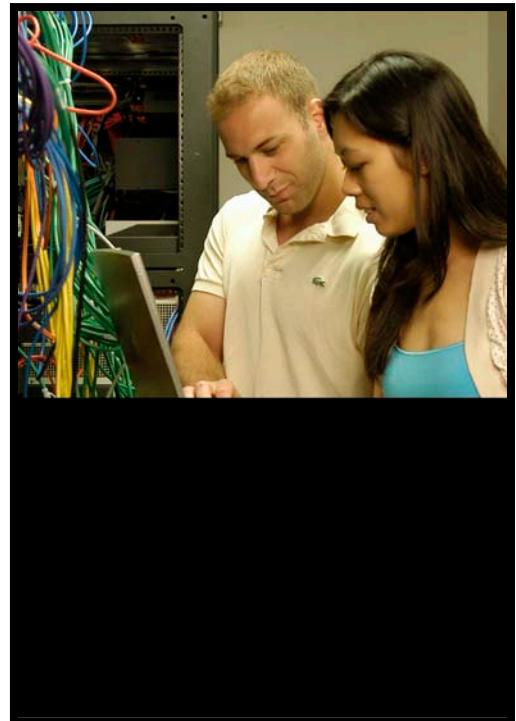
- Private, non-sectarian, not-for-profit, urban, teaching university
- Located in the city of Harrisburg in the county of Dauphin
- Incorporated in Commonwealth of Pennsylvania: December 12, 2001
- Chartered by Pennsylvania Department of Education: January 20, 2005
- Only STEM-focused comprehensive university located between Philadelphia and Pittsburgh
- Tuition is among the lowest of any private university in the Commonwealth
- 66 full- and part-time employees
- New 16-story \$73-million state-of-the-art Academic Center

## **Student Population:**

- 349 total student enrollment
- 52% minority
- 96% demonstrate financial need
- 48 % female, 52% male

## **Academics:**

- Full-time faculty with Ph.D. or Terminal Degree: 100%
- Student/Faculty Ratio: 9 to 1
- Average Class Size: 13
- Bachelor of Science (B.S.) degrees awarded in Biotechnology Biosciences, Computer and Information Sciences, e-Business & Management, Geography and Geospatial Imaging, and Integrative Sciences
- Master of Science Degrees awarded in Information Technology Project Management, and Learning Technologies
- Trimester system



and

## Institutional Leadership:

Governance of the University includes a 30-member, independent, self-perpetuating Board of Trustees led by the Executive Committee. The Board of Trustees delegates authority for day-to-day operations to senior management.



## Home of:

- The National Science Foundation-funded Science Education for New Civic Engagements and Responsibilities (SENCER) project, and the National Center for Science and Civic Engagement
- Central Pennsylvania's only master's degrees in IT Project Management, or Learning Technologies
- The Center for Advanced Entertainment and Learning Technologies in partnership with Carnegie Mellon University and TechQuest.

## Institutional Affiliations & Partnerships:

- American Council on Education (ACE)
- Association of Independent Colleges and Universities of Pennsylvania (AICUP)
- Coalition of Urban and Metropolitan Universities (CUMU)
- National Science Foundation (NSF)
- Technology Council of Central Pennsylvania (TCCP)

Harrisburg University's location in dynamic downtown Harrisburg connects people to a diverse and exciting community that is a wonderful place to call home. *Money Magazine* rates Harrisburg as one



of the nation's top "Up and Coming Cities" and the area is ranked 12th in the "Best Places to Live" category by *Kiplinger's Personal Finance*. The Capital Region is home to over 600,000 residents, making it the 52<sup>nd</sup> largest statistical metropolitan area in the nation. Characterized by rolling mountains, the Susquehanna River, and rural areas meeting towns and cities, the Harrisburg region is a beautiful backdrop to Harrisburg University.

the center for commerce regionally with a thriving, bustling downtown community of which Harrisburg University takes its home in the center. Strawberry Square, a downtown shopping center connected to our campus and new building, is the student center. The Whitaker Center for Science and the Arts provides auditorium space and numerous cultural events. Restaurant Row and City Island provide countless dining, shopping, sporting and socializing events. The scenic nature areas along the nearby Susquehanna River offer a relaxing escape from classes and are the site for local concerts, art festivals, and shows. It is also possible to tour Harrisburg's many historic museums, workout at the local fitness clubs, visit the theatres or take in a minor league baseball game.



The Director of Learning Assessment is responsible for developing and implementing the university's efforts to assess, document, and improve student learning. This position is instrumental in measuring and evaluating student learning to ensure a progressive advancement toward the mission and goals of Harrisburg University. The position will report to the Provost, and work closely with faculty and staff to implement and improve student learning assessment activities.



### Responsibilities:

1. Provides leadership, training, and support to faculty, staff and administrators in the design and implementation of programs and activities that assess and evaluate student learning.
2. Make recommendations for improvement in student learning assessment in a manner consistent with regional accreditation requirements.
3. Assist faculty and administrators with aligning and mapping curriculum to ensure inclusion of all University competencies.
4. Supports the achievement of student learning outcomes across all academic programs at the University.
5. Coordinates student learning assessment activities with institutional assessment work.
6. Collects and reports on a wide variety of assessment specific institutional data to ensure that student learning outcomes are systemic, coordinated, timely and support institutional decision making, policy making, and strategic planning goals.
7. Tracks student learning outcomes against strategic planning goals of academic areas, while also conducting ad-hoc studies on the effectiveness of student learning outcomes for courses and programs. Analyze and interpret data gathered, both quantitative and qualitative.
8. Promotes a collaborative working and learning environment with students, faculty and staff at all levels of the University community.
9. Completes relevant duties and other projects as assigned.

- A Master's Degree required in related area; a Doctorate degree is preferred.
- A vision that connects assessment practices with teaching and learning excellence.
- An understanding of theory and best practices in assessing student learning outcomes and improving student learning at the university level.
- Knowledge of regional accreditation standards with regard to the assessment of student learning.
- Expertise in utilizing traditional and contemporary research techniques to collect, analyze, and report assessment data for quantitative and qualitative evaluation.
- Experience with assisting staff and faculty members in using assessment results to improve teaching and learning.
- Knowledge of and experience with electronic portfolios and other technological means of conducting and managing assessment.
- Outstanding ability to work independently and in a team environment to meet established goals.
- Exceptional interpersonal skills and ability to effectively communicate orally and in writing with people from varied social, educational, and economic backgrounds.



Harrisburg University requires dedicated professionals who have the experience and desire to work in an active and collaborative environment that stresses high quality service deliver, entrepreneurial spirit, and close contact with a diverse group of internal and external constituents. HU is committed to the support and encouragement of a multicultural environment and seeks candidates who can make a positive contribution in this context.

Interested applicants should forward a cover letter and curriculum vitae to the attention of:



20 North 2<sup>nd</sup> Street  
Harrisburg, PA 17101  
resumes@affionpublic.com  
888.321.4922 toll free  
717.214.2205 fax

Reference HU-DLA

How to Apply

